

Apt 8 Elmwood 26 Whalley Road, Whalley Range, Manchester, M16 8AB



JP&Brimelow
ESTATE AGENTS

Offers In The Region Of £130,000

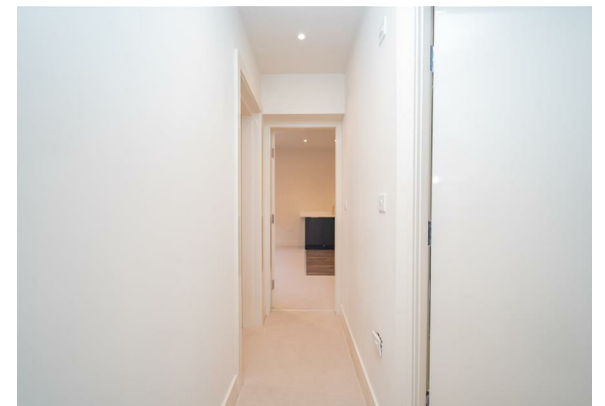
****CALL 0161-882-2233 to register your interest in this exciting new development of ONE & TWO DOUBLE BEDROOMED APARTMENTS****

A fully refurbished development within these two VICTORIAN bay fronted semi-detached properties known as 'Elmwood', this is the place to live in as each apartment has been designed to accommodate the busy lifestyles of today's city professional and first-time buyers. Located on a highly popular tree lined residential road here in Whalley Range off Wood Road.

A unique development of 17 apartments in number 26 (5 x 1 bedroom and 12 x 2 bedroom), all aspects of living in this energetic location have been considered, from the peace and tranquillity of nearby large open green spaces off Withington Road to the lively night-life of the thriving food and drink scene on Manchester Road in Chorlton. This exciting development features secure allocated parking for selected apartments, electric charge points, double glazed throughout, electric heating, fully fitted kitchens, three-piece bathrooms and a communal lawned garden with a patio area and secure storage for bicycles.

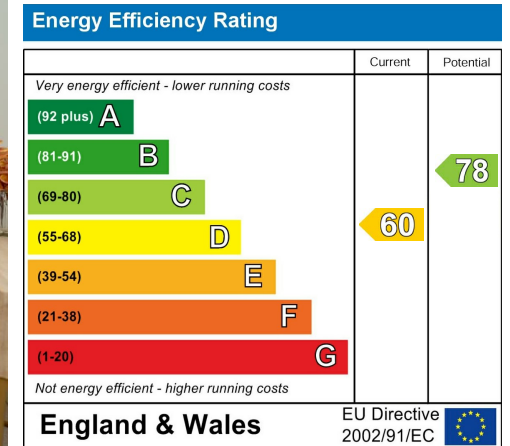
****£1,000 RESERVATION FEE & RESERVATION FORM to be completed prior to agreement**.**

(All enquiries please email: danny@jpbrimelow.co.uk).





EPC Chart



Tenure: **Leasehold** Council Tax Band: **A**

Ground Floor



Chorlton & Didsbury Ltd
430 Barlow Moor Road, Chorlton, Manchester, M21 8AD
Chorlton: 0161 882 2233 Didsbury: 0161 448 0622
E: chorlton@jpbrimelow.co.uk www.jpbrimelow.co.uk



JP & Brimelow
ESTATE AGENTS

NOTICE: J P & Brimelow Chorlton & Didsbury Ltd for themselves and for the vendors or lessors of this property whose agents they are give notice that:

- (i) the particulars are set out as a general outline only for the guidance of intending purchasers or lessees, and do not constitute, nor constitute part of, an offer or contract;
- (ii) all descriptions, dimensions, references to the condition and necessary permissions for use and occupation, and other details are given in good faith and are believed to be correct but any intending purchasers or tenants should not rely on them as statements or representations of fact but must satisfy themselves by inspection or otherwise as to the correctness of each of them;
- (iii) no person in the employment of JP & Brimelow Ltd has any authority to make or give any representation or warranty whatever in relation to this property.



Follow us on Twitter @jpandbrimelows